



PF-DNR Habitat Work Party



What: Cutting brush and small trees with chainsaws/brush saws and treating stumps with herbicide

Who: Volunteers and Conservationists willing to do some work to create better habitat!

When: Saturday March 13, 2010 8AM-12PM

Where: Killsnake Wildlife Area-Intersection of Riverview Rd and Hwy E Northeast of Chilton (See attached map)

Why: To reduce brush and trees that inhibit pheasant and grassland bird reproduction (including Species of Greatest Conservation Need such as Dickcissel, E. Meadowlark, Henslow's Sparrow, and Yellow-throated Warbler), and to increase the diversity of nesting habitat






Other Info: Lunch (burgers and brats/hot dogs) and refreshments (soda and water) will be provided. There will only be a couple of chainsaws so bring your own if you have one. Personal Protective Equipment (chaps, helmet, steel toe boots, gloves, ear plugs, etc.) is required to run a saw. To RSVP call Rick Krause at 920-716-5809 or Josh Jackl at 920-832-2825

WE HOPE TO SEE YOU THERE!!!

Killsnake WA

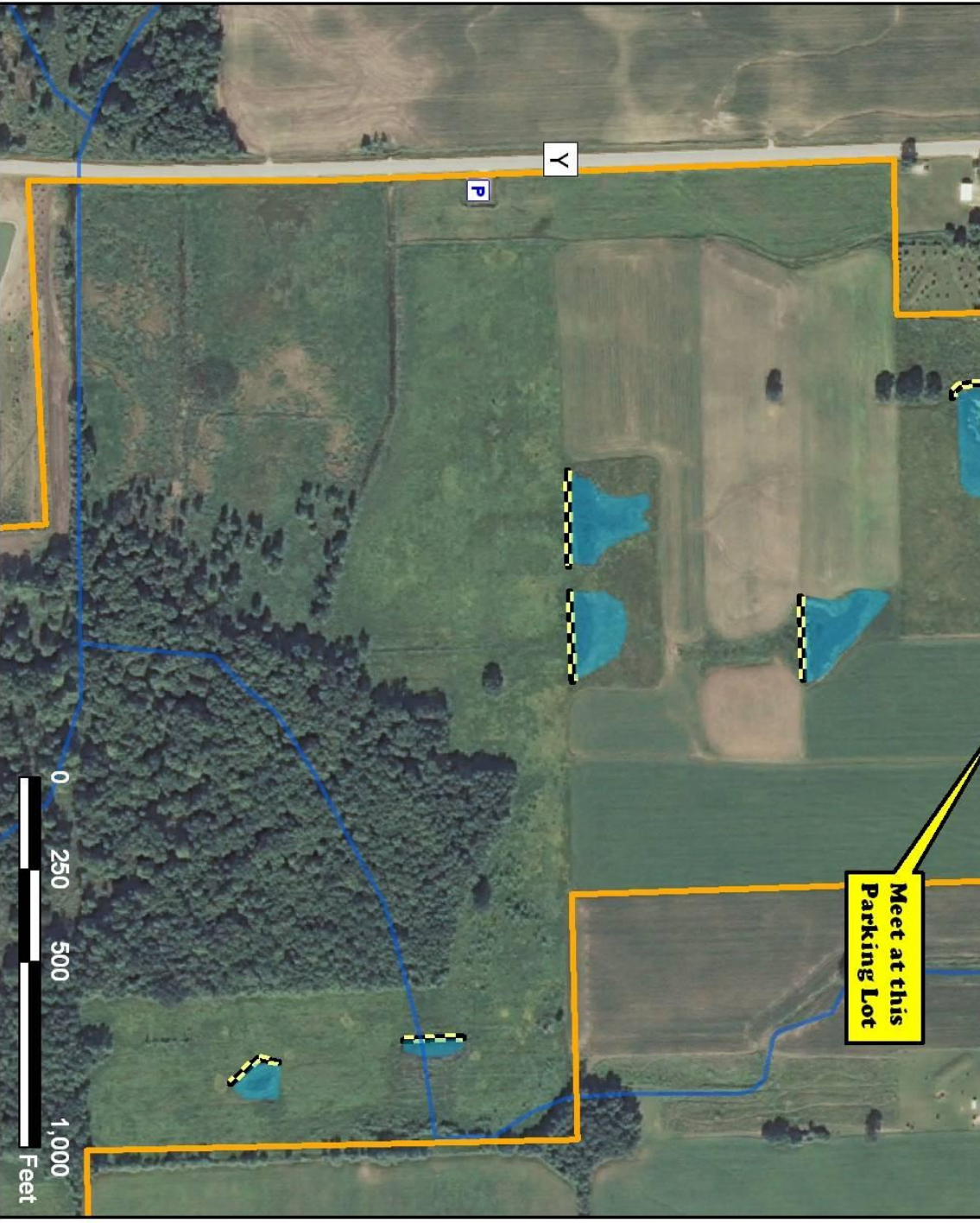
Calumet County
Rantoul Township
T19N R20E
Section 34

Legend

-  State Land
-  Parking Lots
-  Berms
-  Streams
-  Scrapes



Summer 2008 Aerialphoto JWA 3/10



Meet at this
Parking Lot

0 250 500 1,000
Feet